

# HIGHLAND COURT

## Apartments



Highland Court Apartment's colonial-style one-bedroom apartments offer charm and convenience in Northwest Tacoma. Deluxe one-bedroom and two-apartment homes that have energy efficient windows, ample built-in bedroom wardrobe storage, kitchen pantry, and cozy kitchens with GE appliances. Highland Court residents appreciate our complimentary onsite laundry facilities and off-street parking. Highland Court is an easy commute to Tacoma Community College and conveniently located minutes from Fircrest, University Place and downtown Tacoma. Enjoy exploring nearby Snake Lake Nature Center, China Lake Park, Heidelberg Davis Ball Park, Cheney Stadium, Allenmore and Tacoma Firs golf courses, movie theaters, and more!



1122 S. Highland Avenue  
Tacoma, WA 98465

253.566.6000 • 253.472.RENT

highlandcourt@dmcimail.com



Scan to Visit our Website!

### Apartment Features:

- Energy Efficient Windows and Wood Plank Flooring
- Interior Storage with "Built-In" Organizers and Pantries Available
- Cozy Kitchen with White-on-White Appliances
- Easy-to-Clean White Cabinetry

### Community Features:

- Free On-Site Laundry Facility
- Beautiful Landscaping
- Close Proximity to Tacoma Community College, YMCA, Restaurants, Shops, and Entertainment
- Off-Street Parking Available
- Easy Accessibility to I-5 Freeway

Professionally managed by  
**DMCI Dobler Management**  
COMPANY, INC.

Proud Participant  
**SMOKE-FREE HOUSING**  
PIERCE COUNTY



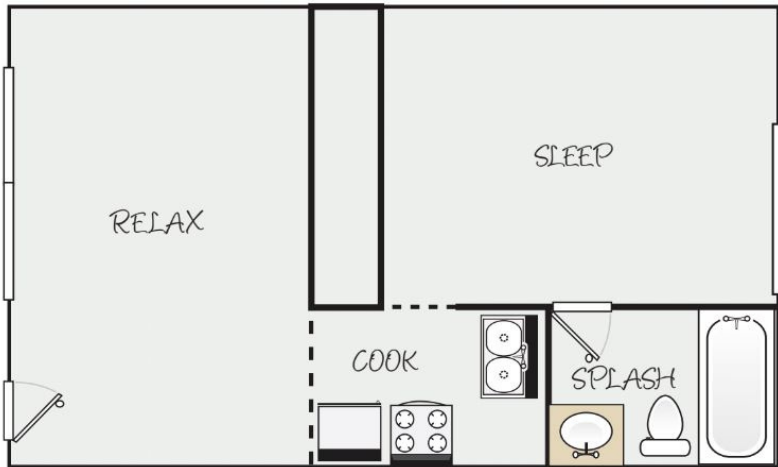
# HIGHLAND COURT

## Apartments

### Standard 1 Bedroom

Starting at \$ \_\_\_\_\_

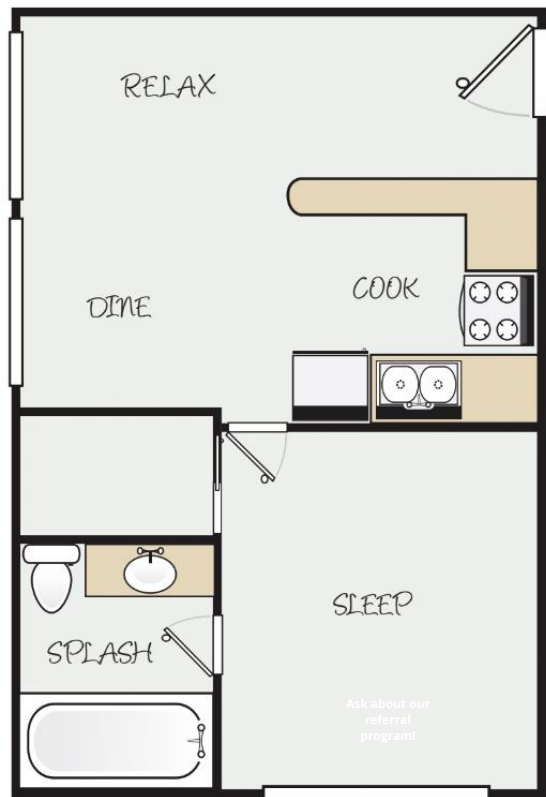
\_\_\_\_\_ Square Feet



### Deluxe 1 Bedroom

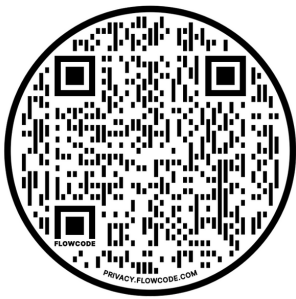
Starting at \$ \_\_\_\_\_

\_\_\_\_\_ Square Feet



### Directions:

From I-5, take the Highway 16 exit going West. Take the Orchard Street exit and turn left onto S. 12th Street and then take a right onto S. Highland Avenue. Highland Court Apartments will be on your left.



Scan to Visit our Website!

WE PAY \$350 FOR RESIDENT REFERRALS AND \$250 FOR NON-RESIDENT REFERRALS!

Professionally managed by



Feline Friendly

The rent, features, plans, specifications, promotions, incentives, and available locations are subject to restrictions and subject to change without notice. Additional fees, deposits, and lease lengths may be required. Early termination of leases can and will be subject to penalties and/or forfeiture of deposits and discounts. Stated dimensions and maps are approximate and should not be used as a representation of any precise or actual size, location, or orientation and not all features and views are available in all units. Any photographs or illustrations used reflect artists' conceptions and are for illustrative purposes only. Photographs or renderings of people do not depict or indicate any preference regarding race, religion, gender, sexual orientation, disability, familial status, or national origin.